

# ANIMAL CARE COURSES



# WELCOME TO THE COLLEGE OF ANIMAL WELFARE

The College of Animal Welfare was established in 1989 by one of the leading animal welfare charities, Wood Green Animal Shelters in Cambridgeshire. The vision was to use education to help tackle animal welfare issues and the problem of unwanted and abandoned animals.

In 1996, the College, known at the time as the Wood Green College of Animal Welfare, became an independently managed, not-for-profit, organisation in its own right and changed its name to The College of Animal Welfare. Today, the College has five main centres in Cambridgeshire, North London, Leeds, Wigan and Edinburgh, as well as satellite centres across the UK, and specialises in training in the land-based sector.

We strongly believe that education and training is the key to raising standards of animal welfare. To this end, we strive to create new and accessible opportunities for learning, and encourage employers and those working with animals to undertake appropriate levels of training and continue with lifelong learning and education.

## WHY ANIMAL CARE?

### ✓Rewarding profession

There are many benefits that come from working with animals, for instance, seeing an animal recover from injury or be rehomed to a loving family can make all the hard work worthwhile.

### ✓Varied career options

Job prospects for those working in animal care are varied. As an animal care professional, you could work in a variety of different environments, such as a kennels, cattery, grooming parlour or rescue centre, perhaps looking to take on a supervisory or managerial role over time. What's more - many jobs in the animal care sector are flexible, with opportunities to work for yourself, work part-time or even overseas.

## FUNDING YOUR COURSE

We offer a number of different ways to pay for your course to make learning as accessible as possible. We advise that you look at our website for the current course fees.

Payment options can vary depending on which course you choose to study and your individual circumstance, but may include:

- Our Pay As You Learn (monthly payment) scheme
- CAW Loans2Learn personal loan scheme
- The Government's Advanced Learner Loans for level 3 and above courses.

## Speak to a Client Advisor

If studying animal care is something you are thinking about but would like to talk through your options, please call us and speak to one of our Client Advisors. They are here to help and make sure that you choose the course that is right for you.

T: 01480 422060 E: [admin@caw.ac.uk](mailto:admin@caw.ac.uk)

## Register for an Open Day

Want to learn more about our courses and what it's like to study with us? Register for an open day below.

[www.caw.ac.uk](http://www.caw.ac.uk) - Open Days



# MEET OUR STUDENTS

**Josh studied the Animal Care and Welfare Assistant Level 2 Apprenticeship and has Attention Deficit Hyperactivity Disorder (ADHD). Josh shares his experiences training at CAW...**

*"My apprenticeship included English and maths, and I found that a real challenge at first – but my tutors were great and really helped me to take things at my pace, and my greatest achievement was passing my English and maths Level 1 exams first time. I am so much more confident than I was – I talk to the public about the guinea pigs and all the other animals we have here at work, and love being able to move around at work when I need to, and to work with such understanding colleagues and tutors."*

**Josh, Animal Care and Welfare Assistant (Level 2 Apprenticeship)**

[Read Josh's story](#)



*"I had a fantastic tutor who really helped me along my learning journey. Course content was the best part. The assessments were fun and interesting to carry out, completing the learning practicals for grooming and health checks. I found the biology assessments very interesting. The course content alongside my work placement has worked well. I have thoroughly enjoyed my learning and have not found any bad parts during my learning. My experience with my tutor has been fantastic – I have had her full support and no question is a silly one."*

**Samantha, Level 2 Diploma in Animal Care Online Learning**

*"The best part of learning with CAW was the constant support and assistance of my distance learning tutor, Lisa. I also very much enjoyed the variety of course materials, as well as the access to the extensive online library."*

**Alice, Level 2 Diploma in Animal Care Online Learning**

*"I really enjoyed the different assignments that were set as I was able to lay them out how I wanted to using photos and tables, and I could also choose the animals I wanted to write about in my assignments. I would highly recommend the Animal Care Level 2 and 3 courses as they are enjoyable qualifications and look good on a CV! I would also recommend an apprenticeship as it really helps you through your qualification by gaining experience on a daily basis."*

**Shannon, Level 2 Diploma in Work-based Animal Care**

**Watch our video to meet some of our former animal care apprentices.**





# CITY & GUILDS LEVEL 2 DIPLOMA IN ANIMAL CARE ONLINE LEARNING

*Awarded by City & Guilds, this online course (distance learning), is an ideal way to gain an internationally recognised animal care qualification without attending College. If you are looking for the flexibility of studying a qualification alongside your existing commitments, for either personal interest or because you dream of working with animals, then this course could be for you!*

## KEY FACTS

### DURATION

12 months.

### ATTENDANCE

You will not be required to attend college. Your course materials will be supplied via our online Virtual Learning Environment (VLE) and you will be allocated a distance learning tutor who will support you through the course.

### START DATE

Start at any time.

### LOCATION

This online programme can be studied anywhere in the UK or overseas. Previous students who have studied online with us have come from as far away as Bermuda, Sri Lanka, Hong Kong and Dubai!

## CONTENT

You will study the following units:

### UNIT 201 – MAINTAIN ANIMAL HEALTH AND WELFARE

On completion of this unit, you will be able to maintain and promote the health and welfare of a range of animals. You will be able to identify any signs of ill health or impending problems and know how to support and monitor an animal's recovery.

### UNIT 202 – UNDERTAKE PRACTICAL ANIMAL FEEDING

During this unit you will learn how to recognise, prepare and select appropriate feeding equipment and foodstuffs needed to keep animals at their optimum nutritional state, including the feeding requirements of animals during different life stages.

### UNIT 203 – MAINTAIN ANIMAL ACCOMMODATION

This unit looks at the design, construction and maintenance of animal accommodation. On completion you will know how to source accommodation which meets the welfare and safety needs of a range of species, and understand the cleaning and preparation requirements for a variety of animal housing.

### UNIT 204 – UNDERTAKE WORK RELATED EXPERIENCE

As part of the qualification you will be required to undertake at least 150 hours of work experience in the animal industry; this could be gained through voluntary work or paid employment. This practical experience will increase your confidence and give you the opportunity to apply your new knowledge and skills in the working environment.

### UNIT 205 – UNDERSTAND THE PRINCIPLES OF ANIMAL BIOLOGY

During this unit you will gain an understanding of how the animal body works. You will look at the structure and function of cells and the different body systems. You will also learn how animals are grouped and named and look at the principles of reproduction and heredity.

### UNIT 206 – PRINCIPLES AND PRACTICES OF ANIMAL BEHAVIOUR AND HANDLING

You will look at the principles of animal behaviour and handling, and how these can be applied in practise. You will be able to identify normal and abnormal behaviour and learn the skills and knowledge to approach animals based on their displayed behaviour to minimise risk and stress.

### UNIT 210 – INTRODUCTION TO ANIMAL BREEDS AND GROOMING

At the end of this unit you will gain an understanding of the concepts of animal evolution and domestication, and be able to identify commonly kept breeds of dogs, cats and other pet species.



## ASSESSMENT

You will complete both assignments and practical assessments. Assignments will be submitted via our online Virtual Learning Environment (VLE). Your practical assessments will be carried out by an allocated mentor in the organisation where you undertake your work experience.

## ENTRY REQUIREMENTS

There are no formal academic entry requirements. However you should have a sound level of numeracy, literacy and ICT skills, have a passion for animals and be up-to-date with your tetanus vaccination.

You should either be employed, or have a voluntary work placement arranged, in a suitable animal care environment before applying as you will need to complete a total of 150 hours of practical work (min 4 hours per week) in order to achieve the qualification. This could be in, for example, a rescue centre, pet shop which has animals for sale or a boarding kennels/cattery\*.

You will need access to at least three animal species as part of your practical assessment in order to achieve the qualification; this must include companion dogs and cats and then either small animals (rabbits or rodents) or exotics or large mammals (goats, camelids, donkeys, pigs or other available large mammals). You are able to have more than one work placement during the course to gain this experience.

You will also require a mentor, this is someone with 2 years minimum relevant experience within the industry or who has a relevant level 2 or above qualification.

If you are studying this programme overseas, please be aware that the programme is delivered in English and therefore you must be competent in reading and writing English language.

*\*Please note that work placements in wildlife hospitals or rescue centres dealing solely with wild animals are not advisable. Veterinary practice placements will be considered on an individual basis and may need to be used in conjunction with another animal care based placement.*

## FEES

Fees can be found on our [website](#).

## WHAT NEXT?

On completion of this online course, you will receive a City & Guilds Level 2 Diploma in Animal Care certificate; demonstrating to employers and clients your underpinning knowledge and skills. You could apply for jobs as a rescue centre worker, dog walker, kennel/cattery worker, pet shop assistant, zookeeper and many more.

You may also look at progressing onto a higher level animal care course to continue your learning such as the [Level 3 Diploma in Work-based Animal Care](#) or the [City & Guilds Level 3 Animal Management](#).

### Ready to apply? It's simple...

1. Visit our [website](#).
2. Find the course you wish to apply for.
3. Click on the 'Apply Now' button and follow the step-by-step instructions.
4. Once you have completed your application you will be contacted by a member of our admissions team with the next steps.





# CITY & GUILDS LEVEL 2 AWARD IN WORK-BASED ANIMAL CARE

*If you are working in a kennel and/or cattery environment it is more important than ever to make sure you have suitable training or experience in accordance with the new 'The Animal Welfare (Licensing of Activities Involving Animals) (England) Regulations 2018'. This level two Ofqual accredited City & Guilds qualification complies with the requirement of this new legislation.*

*Your course materials will be provided via our online Virtual Learning Environment (VLE), meaning you can work towards your qualification in your own time, at work or at home, or even on the move! You will be required to attend one day of online lectures in your chosen subjects.*

## KEY FACTS

### DURATION

3-6 months.

### ATTENDANCE

You will not be required to come into college; your assessment and support will be carried out in your workplace, and via email, telephone and Microsoft Teams contact with one of our work-based learning assessors.

### START DATE

Start at any time.

## CONTENT

You will look at the following units:

- Select, prepare and maintain animal accommodation
- Prepare and provide food and water

Other practical units can be studied from the City & Guilds syllabus to meet the awarding body requirements.

## ASSESSMENT

You will complete:

- **Two case logs;** one will focus on accommodation and the other on feeding
- **Observation in the workplace;** you will be observed by a College assessor in your workplace to look at your application of knowledge in the workplace
- **Question book**

## ENTRY REQUIREMENTS

There are no formal academic requirements, however you should be working or volunteering in a suitable animal care environment such as a kennel or cattery to undertake the course, and have a mentor in your workplace who is willing to

support you through your qualification. This course is only available to those living in the UK.

## FEES

Fees can be found on our [website](#).

## WHAT NEXT?

You may wish to build on the level 2 award by progressing onto the [Level 2 Diploma in Work-based Animal Care](#) course. Your award will give you exemptions from some of the units on the diploma.



# CITY & GUILDS LEVEL 2 DIPLOMA IN WORK-BASED ANIMAL CARE

*This programme is ideal for those who are working with animals, looking for a qualification that reflects their practical skills and knowledge. The knowledge you will gain from undertaking this qualification, alongside the practical experience you will be accumulating through employment or work experience, will enable you to do your job more effectively and boost your career prospects.*

## KEY FACTS

**DURATION** 12-14 months.

**ATTENDANCE** As this qualification is work-based no college attendance is required. Your tuition will be provided online, and you will be supported by a personal tutor who will assess your work and provide feedback. Regular contact and support will be carried out by your tutor via email, telephone and Microsoft Teams.

**START DATE** Start at any time.

## CONTENT

**You will undertake the following mandatory units:**

- Maintain and develop personal performance
- Establish and maintain effective working relationships with others
- Promote and maintain the health and well-being of animals
- Select and prepare accommodation for animals
- Maintain animal accommodation
- Control and restrain animals
- Moving animals between locations
- Make sure your own actions reduce risks to health and safety
- Maintain the cleanliness and bio security of the animal care working environment
- Prepare feed for animals
- Provide feed and water to animals

**You will then choose from a range of optional units such as:**

- Provide controlled exercise opportunities for animals

- Provide opportunities for animals to have freedom to exercise
- Welcome, receive and care for visitors to sites
- Prepare and groom animals
- Dry dogs prepare their coats for styling
- Load and unload animals for transportation

As some of the units that make up the qualification are optional, you will have the opportunity to discuss the units that you will be undertaking at induction to make sure they fit with your interests and job role.

## ASSESSMENT

You will complete a portfolio and pass work-based practical assessments.

## ENTRY REQUIREMENTS

There are no formal academic entry requirements; however you should be employed in a suitable animal care environment (such as a boarding kennels, cattery, animal charity or zoo). You must have a mentor in your workplace who is willing to support you through your qualification. This course is only available to those living in the UK.

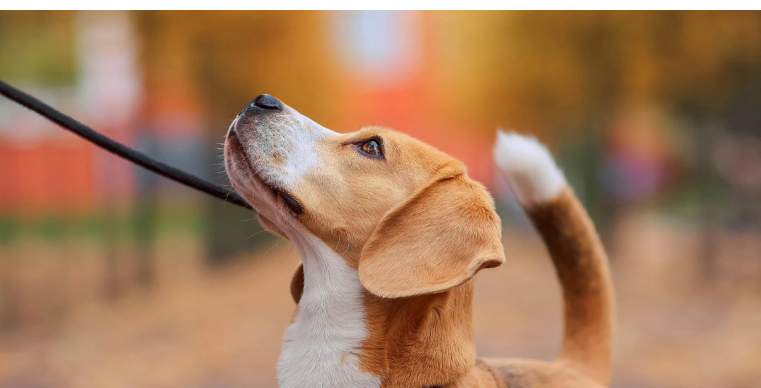
## FEES

Fees can be found on our [website](#).

## WHAT NEXT?

Completion of this qualification will demonstrate to employers your practical skills and abilities, standing you in good stead when applying for future job roles in the industry. Depending on your personal skills and career aims, you could pursue employment in, for example, a cattery, kennels or rescue centre.

This course will also lay the foundations for further animal care study. As such you may wish to look at undertaking the [Level 3 Diploma in Work-based Animal Care](#). To do this, you will need to be working in a supervisory role.



# CITY & GUILDS LEVEL 3 DIPLOMA IN WORK-BASED ANIMAL CARE

*As a qualification that leading animal welfare organisations invest in for their own staff training, this City & Guilds accredited programme is ideal if you have already worked in the animal care sector for some time and are working in a supervisory or managerial role. This qualification will demonstrate and develop your skills in planning and coordinating the care of animals and the leadership of staff in the workplace.*

## KEY FACTS

**DURATION** 14–16 months.

**ATTENDANCE** As this qualification is work-based no college attendance is required. Your tuition will be provided online, and you will be supported by a personal tutor who will assess your work and provide feedback. Regular contact and support will be carried out by your tutor via email, telephone and Microsoft Teams.

**START DATE** Start at any time.

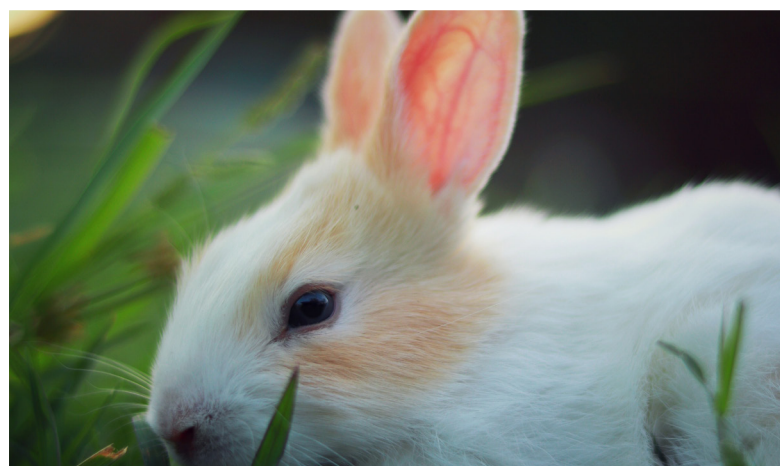
## CONTENT

**You will undertake the following mandatory units:**

- Implement, monitor and evaluate plans for the health and welfare of animals
- Promote, monitor and maintain health, safety and security of the workplace
- Plan the handling and restraint of animals
- Plan, supervise and control the movement of animals
- Plan diets and feeding regimes for animals
- Monitor and evaluate the feeding of animals
- Plan the accommodation of animals
- Monitor and evaluate the accommodation of animals
- Load and unload animals for transportation
- Establish animals in a new environment

**You will then choose from a range of optional units such as:**

- Welcome, receive and care for visitors to sites
- Provide advice and guidance on the choice and care of animals to prospective keepers
- Assess the suitability of new environments for the placement of animals
- Recognise and interpret the behaviour of animals
- Prepare for the transportation of animals
- Maintain the health and welfare of animals during transportation



- Plan, monitor and evaluate the transportation of animals
- Encourage and motivate volunteers
- Manage the work of volunteers
- Organise the receipt and storage of goods in a retail environment
- Help customers to choose products in a retail environment
- Maintain the availability of goods for sale to customers in a retail environment

The optional units you will undertake will be discussed at induction depending on your job role and interests.

## ASSESSMENT

You will complete a portfolio and pass work-based practical assessments.

## Speak to a Client Advisor

If studying animal care is something you are thinking about but would like to talk through your options, please call us and speak to one of our Client Advisors. They are here to help and make sure that you choose the course that is right for you.

T: 01480 422060 E: [admin@caw.ac.uk](mailto:admin@caw.ac.uk)



## ENTRY REQUIREMENTS

There are no formal academic entry requirements; however you should be employed or volunteering, in a supervisory or managerial position, in a suitable animal care environment, such as a boarding kennels or cattery, animal charity, zoo or wildlife centre for a minimum of 20 hours per week.

You must have a mentor in your workplace who is willing to support you through your qualification.

This course is only available to those living in the United Kingdom.

## FEES

Fees can be found on our [website](#).

## WHAT NEXT?

Completion of this course should give you the leadership skills and abilities needed to effectively plan and coordinate the care of animals and the allocation of tasks to staff within the workplace. This puts you in an excellent position professionally, particularly when applying for supervisory and managerial positions within the animal care industry.

You may wish to continue your studies by undertaking a Higher Education course, such as a foundation degree in animal management (subject to individual university entry requirements) or look at other related courses such as behaviour or training.

## Ready to apply? It's simple...

1. Visit our [website](#).
2. Find the course you wish to apply for.
3. Click on the 'Apply Now' button and follow the step-by-step instructions.
4. Once you have completed your application you will be contacted by a member of our admissions team with the next steps.



# CITY & GUILDS LEVEL 3 ANIMAL MANAGEMENT

*This online learning programme (equivalent of up to 3 A levels depending on the credits you achieve) is designed to give you an advanced level of understanding and skills in animal welfare and management.*

*During the programme you will learn about the health, welfare and care of a variety of animal species. In addition to the academic theory you will learn from online study, you will also undertake work experience in an animal related environment (300 hours in total when studying the full Level 3 Extended Diploma in Animal Management).*

*The City & Guilds Level 3 Animal Management programme has five different qualification options, allowing you to choose the level of study and qualification that is right for you:*

- *Level 3 Certificate in Animal Management – 30 credits required*
- *Level 3 Subsidiary Diploma in Animal Management – 60 credits required*
- *Level 3 90-credit Diploma in Animal Management – 90 credits required*
- *Level 3 Diploma in Animal Management – 120 credits required*
- *Level 3 Extended Diploma in Animal Management – 180 credits required*

## KEY FACTS

### DURATION

Up to 24 months depending on the credits you choose to study.

### ATTENDANCE

You will not be required to attend college. Your course materials will be supplied via our online Virtual Learning Environment (VLE), and you will be allocated an assessor who will support you through the course.

### START DATE

Start at any time.

### LOCATION

This online programme can be studied anywhere in the UK or overseas. Previous students who have studied online with us have come from as far away as Bermuda, Sri Lanka, Hong Kong and Dubai!

## CONTENT

Depending on the level of the qualification/credits you choose to undertake, you will cover some of the following units:

### MANDATORY UNITS

- 301 – Understand and promote animal health
- 302 – Manage animal accommodation
- 303 – Understand anatomy and physiology
- 304 – Plan and monitor feeding
- 305 – Understand the principles of animal biology
- 306 – Undertake animal handling and safe working

- 307 – Undertake work experience in the land-based industries
- 308 – Undertake an investigative project in the land-based sector
- 310 – Understand and interpret animal behaviour and communication
- 312 – Understand animal welfare and breed development
- 317 – Understand the principles of animal breeding and genetics
- 319 – Understand the principles of animal nutrition
- 323 – Participate in business planning and improvement in the land-based sector





## OPTIONAL UNITS

- 311 – Understand the principles of animal nursing
- 313 – Undertake dog grooming
- 314 – Understand the principles and carry out the practice of exotic animal health and husbandry
- 315 – Undertake kennel and cattery management
- 316 – Undertake pet store design and animal management
- 318 – Understand the principles of zoological animal health and husbandry
- 325 – Understand the principles and carry out the practice of wildlife population surveys, ecology and conservation
- 326 – Understand and undertake wildlife management and rehabilitation
- 328 – Undertake retail merchandising for the land-based sector
- 329 – Undertake the practices of equine health handling and husbandry
- 330 – Undertake estate skills
- 331 – Understand and carry out farm livestock husbandry
- 333 – Understand the principles of inheritance and genetic manipulation including pre, peri and post-operative nursing from admission to discharge.

## ASSESSMENT

You will complete assignments, written tests and practical assessments. Your practical assessments will be carried out by an allocated mentor in the organisation where you undertake your work experience.

## ENTRY REQUIREMENTS

In order to undertake this programme you must:

- Be a minimum of 16 years of age.
- Hold a Level 2 animal-related qualification at merit grade or above, OR 5 GCSEs at grade C/4 or above (including English, Maths and a Science subject).
- Be either employed, or have a voluntary work placement arranged, in a suitable animal care environment for a minimum of 4 hours per week, to support the practical element of the course.
- Have a mentor in place in the workplace, this is someone who has a level 3 or above qualification in animal management, or a minimum of 4-5 years' relevant experience

within the animal industry. You, your mentor and your employer will be interviewed prior to starting the course to assess suitability.

- Be up to date with your tetanus vaccination.
- Applicants that do not meet the academic entry requirements, but can demonstrate a high level of commitment and previous animal-related experience, will be assessed on an individual basis. Please contact us to discuss before applying.

## Work experience requirements

You should either be employed, or have a voluntary work placement arranged, in a suitable animal care environment for a minimum of 4 hours per week, for the duration of the programme.

Examples of suitable animal care environments include: a rescue centre, a pet shop which has animals for sale, a boarding kennels/cattery, animal charities, exotics/wildlife centres, zoo/wildlife parks, farm/livestock, stables, wildlife/ecological conservation sites.

## International Applicants

If you are studying this programme overseas, please be aware that the programme is delivered in English and therefore you must be competent in reading and writing English language.

## FEES

Course fees can be found on our [website](#).

## WHAT NEXT?

After you have achieved this qualification you could pursue work in a variety of fields in animal care, for example: animal rehoming, dog training, pet sitting, dog walking, animal research, conservation or zookeeping.

You could also consider going on to train as a veterinary nurse. The Level 3 Extended Diploma in Animal Management (180 credits required), in combination with a full level 2 qualification in Maths and English Language (e.g. GCSE Grade A\*-C or Level 2 Functional Skills) will allow you to apply for the [Level 3 Diploma in Veterinary Nursing](#) or [Veterinary Nurse Level 3 Apprenticeship](#) programmes.

The Level 3 Extended Diploma in Animal Management (180 credits required) is equivalent to up to 3 A-levels, which means students may also progress (subject to meeting specified entry requirements) into higher education. Degree study paths include animal behaviour, zoology, animal science, conservation, ecology and veterinary nursing.



# ANIMAL CARE APPRENTICESHIPS

## Available at Levels 2 and 3

Students who are employed in a suitable animal care environment in England may wish to undertake an apprenticeship; a significant cost saving to employers!

### KEY FACTS FOR STUDENTS

- ✓ **Earn Whilst You Learn:** Gain a qualification whilst earning a salary.
- ✓ **Gain Valuable Work Experience:** Build your CV with employment history.
- ✓ **No Course Fees to Pay:** All apprentice fees are payable by the employer.
- ✓ **Paid Time off to Study:** You will be given at least six hours per week for your learning activities.
- ✓ **Save Your Employer Money:** Undertaking an apprenticeship can save your employer money on course fees.

### KEY FACTS FOR EMPLOYERS

- ✓ **Save Money on Recruitment:** We can help you to recruit an apprentice free of charge and, with the national minimum wage for apprentices being affordable for many businesses, recruiting an apprentice can make good business sense.
- ✓ **Off-The-Job Training:** Apprentices must be given at least six hours a week to spend on off-the-job training. This can be time spent at college, undertaking online learning, webinars or doing any assignments or revision, for example.
- ✓ **Apprenticeships For All:** Apprenticeships are not just for young people or new recruits, people can be any age to undertake an apprenticeship and can be an existing member of staff looking to gain new knowledge.
- ✓ **Affordable Training for Staff:** Government funding contributions towards apprenticeship fees can make them an affordable way for you to train your staff.
- ✓ **Financial incentives:** There may be additional financial benefits available depending on your apprentice's age and circumstances.



# ANIMAL CARE AND WELFARE ASSISTANT (LEVEL 2 APPRENTICESHIP)

*As an animal care apprentice, you will be employed in an animal care environment gaining vital practical skills and experience, and earning a wage alongside studying your formal apprenticeship qualification. Typical animal care settings that apprentices work in include kennels and catteries, doggy day care facilities, animal welfare centres, farm parks and pet shops.*

*There are different pathways you can undertake and these will be discussed with you at interview to make sure you undertake the apprenticeship pathway that best suits your job role and interests.*

## KEY FACTS

### DURATION

12-14 months, plus an additional three months for independent assessment. A minimum of six hours per week must be spent undertaking off-the-job training.

### ATTENDANCE

Available in England. No college attendance required, however you will be required to attend one afternoon of online lectures per week.

### START DATE

Start at any time.

### LOCATION

As this qualification is work-based no college attendance is required. Your tuition will be provided online, and you will be supported by a personal tutor who will assess your work and provide feedback. Regular contact and support will be carried out by your tutor via email, telephone and Microsoft Teams.

## CONTENT

### CORE KNOWLEDGE, SKILLS AND BEHAVIOURS

You will gain the essential knowledge, skills and behaviours needed of an Animal Care and Welfare Assistant to ensure you maintain safe working practices and take responsibility for yourself, others and the animals in your care.

### KNOWLEDGE

- You will gain a comprehensive understanding of wide range of knowledge areas, including:
- UK and EU Animal related legislation
- Signs that indicate potential problems with animals' health and welfare and the actions that should be taken
- The types of basic medication, routes of administering medication, safe handling and disposal of medication
- Accommodation and environment requirements that are suitable and safe for animals
- The behaviours of the animal, applicable to the species and how it impacts its care and welfare such as stress/distress/pain/fear/frustration
- How the animal you are working with learns and the basic principles of re-enforcement techniques
- Different skin and coat care requirements of animals in their care
- Basic anatomy and physiology
- Basic reproduction and obstetrics and reproductive behaviour, including neutering
- The importance of the human and animal bond
- The changing needs of animals' dependent on their life stage

## Speak to a Client Advisor

If studying animal care is something you are thinking about but would like to talk through your options, please call us and speak to one of our Client Advisors. They are here to help and make sure that you choose the course that is right for you.

T: 01480 422060  
E: [admin@caw.ac.uk](mailto:admin@caw.ac.uk)



## SKILLS

You will gain the skills to be able to:

- work effectively in a safe and healthy working environment following current/relevant health and safety legislation and work place policies
- maintain hygiene, bio security procedures and infection controls when working with animals including quarantine and isolation
- approach/handle/restrain/move/recapture animals as part of routine husbandry appropriate for the species and individual
- exercise/socialise animals and provide appropriate enrichment relevant to their specific needs
- provide food and water to animals and monitor the intake
- identify and describe animals using appropriate methods to the species involved (e.g. scanning for microchips)
- maintain, update and reference correct records in accordance with current legislation
- deliver customer experience (internal and external), where applicable, in line with workplace policies and procedures
- respond to animal first aid, urgent, ongoing and preventive care requirements as appropriate

## BEHAVIOURS

You will look at safe working, work ethic, responsibility, team work, communication and professionalism.

## PATHWAYS

In addition to the core knowledge, skills and behaviours you will undertake further learning relevant to your job role and interests. There are a number of pathways you can choose at The College of Animal Welfare, these are:

- Animal Interaction & Handling
- Rehoming
- Movement and Transportation
- Breeding
- Working Dog Handler
- Operational/Reception Duties
- Wildlife Rehabilitation
- Veterinary Care Support

## ASSESSMENT

### FUNCTIONAL SKILLS

You will undertake Functional Skills Level 1 and Level 2 in English and Maths if you are under 19 years of age (unless exempt).

### PORTFOLIO

During your apprenticeship you will compile a portfolio of evidence to demonstrate your knowledge, skills and behaviours.

Once you have completed your portfolio, Functional Skills and a minimum of 12 months of training, you will be able to undertake the End Point Assessment.

## END POINT ASSESSMENT (EPA)

The EPA consists of:

**Practical Assessment:** An observation of the apprentice by an independent assessor completing two practical tasks.

**Professional Discussion:** A structured discussion between the apprentice and the independent assessor, made up of a portfolio review and 10 competency-based questions to establish an applied level of knowledge, skills and behaviour.

Your performance in the EPA will determine the apprenticeship grade of fail, pass or distinction.

## ENTRY REQUIREMENTS

There are no formal academic entry requirements. However, you will need to be living and working in England in a suitable animal care environment (e.g. a boarding kennels, cattery, animal charity, doggy day care facility) earning at least the National Minimum Wage for Apprentices. To complete this apprenticeship within 12-14 months you will need to be working for a minimum of 30 hours per week, if you are working less than 30 hours a week the length of your apprenticeship will be extended depending on your working hours.

If you have a level 2 (or above) qualification you are still able to undertake this apprenticeship if your current qualification is in an unrelated subject. If your existing qualification is in a similar subject you may not be able to undertake this apprenticeship.

## FEES

Apprenticeship fees are payable by the employer. Fees can be found on our [website](#).

## WHAT NEXT?

On completion of your apprenticeship you will have gained the knowledge, skills, behaviours and practical experience needed to excel in an Animal Care and Welfare Assistant role. If you are looking to study to the next level you may consider undertaking the [Level 3 Animal Care and Welfare Manager Apprenticeship](#) or the [Level 3 Diploma in Work-based Animal Care](#).

## Ready to apply? It's simple...

Visit our [website](#), find the course you wish to apply for, click on the 'Apply Now' button and follow the step-by-step instructions. Once you have completed your application you will be contacted by a member of our admissions team with the next steps.



# ANIMAL CARE AND WELFARE MANAGER (LEVEL 3 APPRENTICESHIP)

*The Animal Care and Welfare Manager Apprenticeship is designed for employees who are supervising and planning the day-to-day husbandry needs of the animals in their care. It will equip you with the skills and knowledge needed to provide the highest standards of welfare in accordance with legislation, regulations and organisational policies.*

## KEY FACTS

### DURATION

18-20 months. A minimum of six hours per week must be spent undertaking off-the-job training.

### ATTENDANCE

No college attendance is required, your course materials will be provided through our Virtual Learning Environment (VLE), and you will be supported by a personal tutor who will assess your work and provide feedback. Regular contact and support will be carried out by your tutor via email, telephone and Microsoft Teams.

### START DATE

Start at any time.

### LOCATION

Available in England.

## CONTENT

During your study you will look at the occupational duties, knowledge, skills and behaviours needed of an animal care and welfare manager to ensure you maintain safe and effective working practices and take responsibility for yourself, others and the animals in your care.

You will undertake the following units of study:

- Monitor and oversee animal care and welfare
- Stakeholder management
- Supervise day to day activities
- Personal development
- Health & Safety
- Produce animal care plans
- Assess animal health and behaviour
- Deliver animal care

Apprentices without level 2 English and maths will need to achieve this level prior to taking the End-Point Assessment. For those with an education, health and care plan or a legacy statement, the apprenticeship's English and maths minimum requirement is Entry Level 3. A British Sign

Language (BSL) qualification is an alternative to the English qualification for those whose primary language is BSL.

## ASSESSMENT

### FUNCTIONAL SKILLS

You will undertake Functional Skills Level 1 and Level 2 in English and Maths if you are under 19 years of age (unless exempt).

### PORTFOLIO

During your apprenticeship you will compile a portfolio of evidence to demonstrate your knowledge, skills and behaviours.

Once you have completed your portfolio, Functional Skills and a minimum of 12 months of training, you will be able to undertake the End Point Assessment.

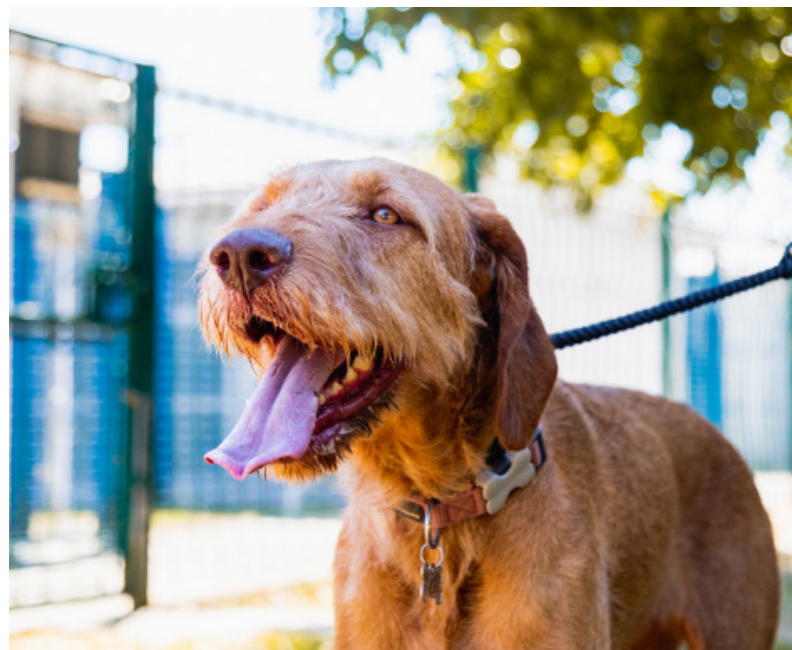
### END POINT ASSESSMENT (EPA)

The EPA consists of:

**Practical Assessment:** An observation of the apprentice by an independent assessor.

**Professional Discussion:** A structured discussion between the apprentice and the independent assessor to establish an applied level of knowledge, skills and behaviour.

Your performance in the EPA will determine the apprenticeship grade of fail, pass or distinction.



## ENTRY REQUIREMENTS

You should hold a level 2 animal care qualification and be living and working in England in a suitable animal care environment (e.g. a boarding kennels, cattery, animal charity, doggy day care facility), either in a supervisory role or working towards it, earning at least the National Minimum Wage for Apprentices. To complete this apprenticeship within 18-20 months you will need to be working for a minimum of 30 hours per week, if you are working less than 30 hours a week the length of your apprenticeship will be extended depending on your working hours.

If a student has not previously achieved Level 2 English and Maths, they will need to complete Functional Skills English and/or maths as part of their apprenticeship.

Applications for those who do not hold a Level 2 animal care qualification but have significant industry experience will be considered on an individual basis.

If you have a level 3 (or above) qualification you may still be able to undertake this apprenticeship if your current qualification is in an unrelated subject. If your existing qualification is in a similar subject it may not be possible for you to undertake this apprenticeship.

## FEES

Apprenticeship fees are payable by the employer. Fees can be found on our [website](#).

## WHAT NEXT?

On completion of your apprenticeship you will have gained the knowledge, skills, behaviours and practical experience needed to excel in as an Animal Care and Welfare Manager. This puts you in an excellent position professionally, particularly when applying for supervisory and managerial positions within the animal care industry.

You may wish to continue your studies by looking at other related courses such as behaviour or training.

## Ready to apply? It's simple...

Visit our [website](#), find the course you wish to apply for, click on the 'Apply Now' button and follow the step-by-step instructions. Once you have completed your application you will be contacted by a member of our admissions team with the next steps.





# VETSKILL VTEC LEVEL 3 AWARD IN PREVENTATIVE CANINE DENTAL CARE AND ORAL HYGIENE

*The Level 3 Award in Preventative Canine Dental Care and Oral Hygiene is designed for people working professionally with dogs, looking to expand their knowledge and practical skills to allow them to incorporate preventative canine dental care and oral hygiene within their role.*

*You will learn about safe methods and techniques to keep the mouth healthy and prevent deterioration that can result in significant health and welfare issues. Preventative canine dental care and oral hygiene is not intended to be used as a substitute for essential regular assessment and treatment by a veterinary professional.*

*The Veterinary Surgeons Act 1966 stipulates who is legally permitted to offer treatment to animals, including dental treatment. During this course you will learn what you are allowed to do, and where your limitations lie, so that you can clean canine teeth and advise owners on oral hygiene and dental care in line with legal and ethical requirements, knowing when to refer to a veterinary surgeon when needed.*

## KEY FACTS

**DURATION** 12–14 weeks.

**ATTENDANCE** You will undertake eight x three hour online lessons, as well as one practical day at either our Huntingdon or Leeds centre. You will also need to attend either our Huntingdon or Leeds centre for assessment; this can be arranged to take place on the same day as your practical training.

## CONTENT

Online learning will be complemented by a practical training day giving you the opportunity to gain confidence in implementing your canine dental and oral hygiene knowledge. Over the course of the qualification you will cover:

- Application of Preventative Canine Dental Care and Oral Hygiene
- Professional Practice
- Canine Oral Anatomy and Physiology
- Canine Oral Health

## ASSESSMENT

You will be assessed via the following:

- **Portfolio of Evidence** You will compile a portfolio of evidence which demonstrates your knowledge, understanding and skills.
- **Multiple-Choice Online Assessment** You will complete a synoptic online multiple-choice question assessment.
- **Practical Evidence** Following the successful completion of the other assessments, you will undertake a practical assessment set by VetSkill.

## ENTRY REQUIREMENTS

You should be over 16 years of age, hold a Level 2 animal-related qualification and be actively working in the animal care industry. Applications from those not holding a level 2 qualification but with significant industry experience (over 12 months) are welcome to apply and will be considered on an individual basis.

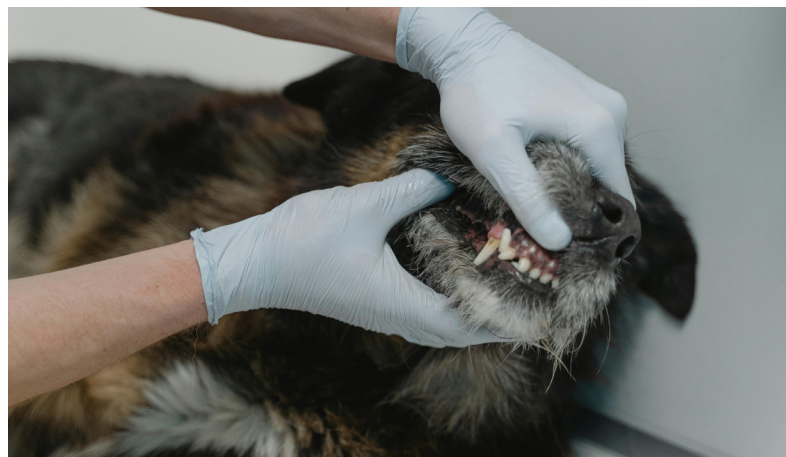
Learners who undertake this qualification typically work in a role such as: Dog Grooming Assistant, Dog Groomer, Dog Walker, Canine Hydrotherapist, Dog Day Care Provider or Kennel Assistant.

## FEES

Course fees can be found on our [website](#).

## WHAT NEXT?

Completion of this qualification will give you the knowledge and confidence to clean canine teeth and advise owners on oral hygiene and dental care in line with legal and ethical requirements. You may look at incorporating preventative canine dental care and oral hygiene into your job role/business.



# VETSKILL VTEC LEVEL 4 AWARD FOR ANIMAL MEDICINES ADVISORS (SQP – COMPANION ANIMAL)

*This qualification is designed for those looking to gain the necessary qualification to be able to prescribe and supply veterinary medicine classes POM-VPS and/or NFA-VPS to companion animals. You may be working in veterinary practice, or in a Suitably Qualified Persons (SQP) retailer approved to sell and supply VPS medicines.*

*It is intended to provide the underpinning knowledge and understanding that will enable prescription of medicines that fall under the POM-VPS and NFA-VPS categories within the companion animal group. Additionally, you will develop a broad understanding of animal health and disease, and the skills to identify parasite infestations and select appropriate medicines to prescribe.*

## KEY FACTS

**DURATION** 6 months.

**ATTENDANCE** Online learning, no college attendance required.

**START DATE** Start at any time.

## CONTENT

You will complete the following units:

### LEGISLATION AND SUITABLY QUALIFIED PERSON (SQP) STATUS FOR THE SUPPLY OF VETERINARY MEDICINES

This unit is designed to provide you with the underpinning knowledge of the duties, responsibilities and scope of the Suitably Qualified Person (SQP). You will gain an understanding of the key legislation governing prescription and supply of veterinary medicines, as well as explore the principles of the Veterinary Medicines Directorate (VMD) SQP Code of Practice.

You will develop an understanding of the limitations of an SQP, when SQPs should refer cases to the veterinary surgeon, as well as essential record keeping and the reporting of adverse medicine reactions to the VMD under the Adverse Event/Reaction Reporting system (previously referred to as SARSS, the Suspected Adverse Reaction Surveillance Scheme).

### COMPANION ANIMAL HEALTH FOR THE SUITABLY QUALIFIED PERSONS (SQP)

This unit is designed to provide you with an overview of companion animal anatomy and physiology, via a systems-based approach. The companion animals that should be covered throughout this unit are: dog, cat, ferret and rabbit. You will also cover basic companion animal nutrition and feeding and the principles of health and disease prevention; along with common

parasites and diseases, which may affect animals seen by a Suitably Qualified Person (SQP).

You will also develop an understanding of commonly-used anatomical and physiological terminology, to enable you to provide clients with advice on appropriate nutrition and feeding. Devising appropriate disease control programmes and interpreting health plans to assist owners/keepers with disease prevention will also be covered.

### PRESCRIBING AND SUPPLYING VETERINARY MEDICINES FOR COMPANION ANIMALS

This practical unit provides you with the opportunity to gain the skills required to safely and appropriately prescribe, supply and dispense veterinary medicines within the scope and limitations of the Suitably Qualified Person (SQP). You will be expected to demonstrate safe and appropriate practice, whilst working within legislative requirements.

Providing species-specific advice and guidance to owners/keepers of companion animals will also be covered. You will be expected to demonstrate proficient use of the Veterinary Medicines Directorate (VMD) Product Information Database, along with an awareness of how to manage a potential adverse event/reaction.





## ASSESSMENT

You will complete three multiple choice question (MCQ) online exams.

## ENTRY REQUIREMENTS

You must be 16 years of age or over and have basic literacy and numeracy skills.

Employment or work experience within a Veterinary Medicines Directorate (VMD) registered premises, a veterinary practice registered with the Royal College of Veterinary Surgeons (RCVS), or a retail pharmacy registered with the General Pharmaceutical Council (GPhC) may be beneficial in assisting in preparation towards the final assessment but is not essential.

This course is only available to those living in the UK.

## FEES

Course fees can be found on our [website](#).

## WHAT NEXT?

Completion of this qualification will mean you have gained a formal qualification allowing you to be able to prescribe certain veterinary medicines to companion animals.

You will be able to gain entry on to the [VetSkill SQP register](#). In order to maintain your place on the register, you will be required to keep your knowledge and skills up to date by undertaking relevant Continuing Professional Development (CPD).

### Ready to apply? It's simple...

Visit our [website](#), find the course you wish to apply for, click on the 'Apply Now' button and follow the step-by-step instructions. Once you have completed your application you will be contacted by a member of our admissions team with the next steps.

### Speak to a Client Advisor

If studying animal care is something you are thinking about but would like to talk through your options, please call us and speak to one of our Client Advisors. They are here to help and make sure that you choose the course that is right for you.

T: 01480 422060 E: [admin@caw.ac.uk](mailto:admin@caw.ac.uk)





The College of Animal Welfare, Chord Business Park, London Road,  
Godmanchester, Cambridgeshire PE29 2BQ

T: 01480 422060    E: [admin@caw.ac.uk](mailto:admin@caw.ac.uk)    W: [www.caw.ac.uk](http://www.caw.ac.uk)

© The College of Animal Welfare May 2025.  
All information is correct at the time of press and may be subject to change.